



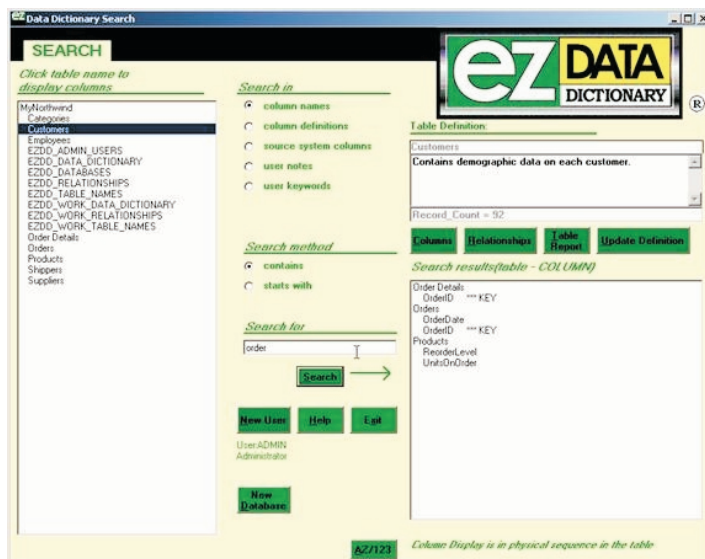
Please call us toll free:  
877-436-1919.

## SEARCH:

The search screen will next appear as shown below:

In the left panel, the name of the database will appear at the top, with the tables within that database indented below it. The center part of the screen is used for search criteria in order to locate a particular desired column of data. The top panel on the right will show the definitions of the tables, as they are selected, as well as the approximate number of records in the table (indicating a relative size of the table). The panel in the lower right shows either:

- 1) the column names of the table, or
- 2) the tables and columns that are the result of a search, or
- 3) the tables that relate to the table that has been selected.

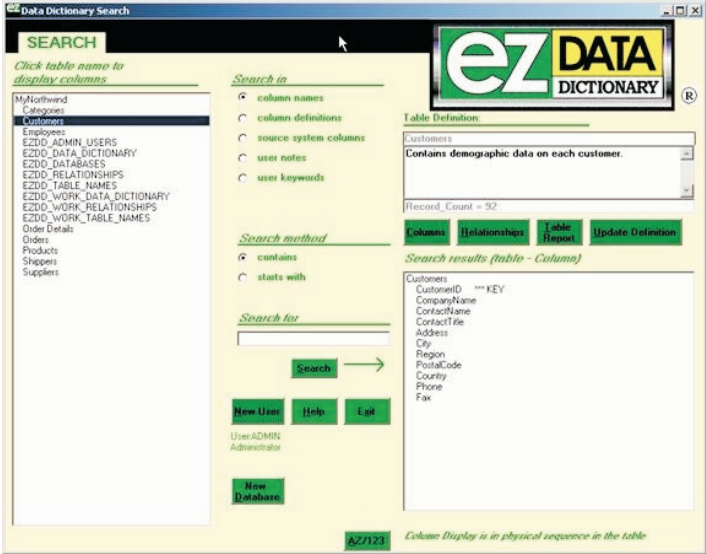




Please call us toll free:  
877-436-1919.

## TABLE INFORMATION:

Let's start by clicking on the Customers table in the top left corner of the screen. Your screen will now look like this:





Please call us toll free:  
877-436-1919.

## DEFINITION:

The table definition and the columns of the table are shown on the right. If the Address column in the right panel is chosen with a mouse click, more detail on that particular column will show on the next screen as illustrated below:

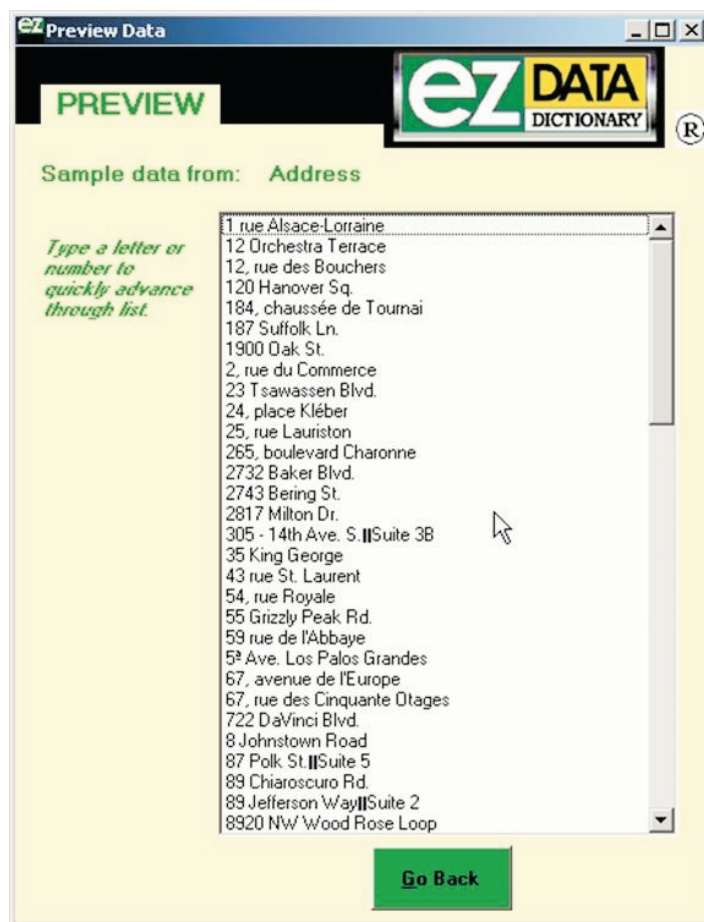
A screenshot of the 'EZ Data Dictionary Definition' application window. The window title is 'EZ Data Dictionary Definition'. The main area is titled 'DEFINITION' and contains several input fields for table and column information. The 'Table' field is set to 'Customers', and the 'Column' field is set to 'Address'. Below these are fields for 'Position', 'Column Type' (set to 'text'), 'Source Database', 'Source System Table', 'Source System Column', 'User Keyword', and 'Column Size'. A 'Column Definition' text area contains the text: 'The address of the customer. This is the street address only and does not include City, State, Zip, etc.'. Below this are 'User Notes' and 'Derivation/Calculation Rules' text areas. At the bottom, there are six buttons: 'Update Definitions', 'Help', 'Exit', 'Copy Definition to Clipboard', 'Preview Data', and 'Go Back'. The EZ DATA DICTIONARY logo is visible in the top right corner of the window.



Please call us toll free:  
877-436-1919.

## PREVIEW DATA:

A click on Preview Data will display a screen as shown below:  
This display lists the first 1,500 unique values in this column of the table.  
This can help in preparing a definition of the data or simply in understanding the data better.





Please call us toll free:  
877-436-1919.

## PREVIEW DATA:

Click on Go Back and the following screen appears again:  
The Column Definition, User Notes, Derivation/Calculation Rules, Source Database, Source System Table, Source System Column or User Keyword can each be modified with the appropriate authority level. After the changes are made, be sure to click on Update Definitions. Simply click on Go Back, if there are no changes, and the main search screen will appear to continue processing.

**Data Dictionary Definition**

**DEFINITION**

**ez DATA DICTIONARY**

Table: Customers      Source Database: \_\_\_\_\_  
Column: Address      Source System Table: \_\_\_\_\_  
Position: 4      Source System Column: \_\_\_\_\_  
Column Type: text      User Keyword: \_\_\_\_\_  
Column Size: 60

**Column Definition:**  
The address of the customer. This is the street address only and does not include City, State, Zip, etc.

**User Notes:**

**Derivation/Calculation Rules:**

Update Definitions    Help    Exit    Copy Definition to Clipboard    Preview Data    Go Back



Please call us toll free:  
877-436-1919.

## TABLE REPORT:

Click on Table Report, and the following screen appears.

Column_Name	Key	Data_Type	Size	Column_Definition
CustomerID	Y	text	5	An alphabetic uniq
CompanyName		text	40	The company name c
ContactName		text	30	The primary contac company
ContactTitle		text	30	The business title
Address		text	60	The address of the address only and d Zip, etc.
City		text	15	The city where the
Region		text	15	The region where t could be a state, grouping, such as
PostalCode		text	10	The zip code or pc address.
Country		text	15	The country in whi

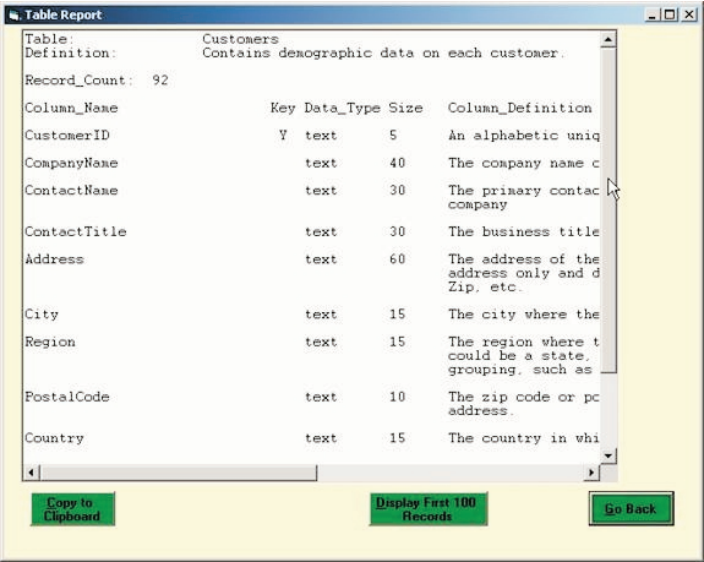


Please call us toll free:  
877-436-1919.

## DISPLAY FIRST 100 RECORDS:

This report displays all the columns with their definitions. Click on Display First 100 Records, and the screen will appear as shown below:

It may be necessary to scroll right or down in order to see more of the data. Given this picture of the actual data can help as documentation is created, by giving a more accurate depiction of the data, or providing a better understanding of the purpose of this table. Click on Go Back, and then Go Back again and the main search screen will appear again.

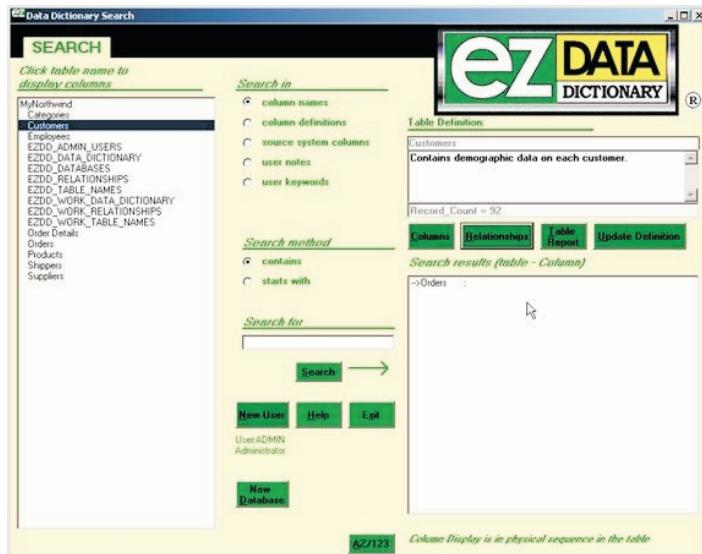




Please call us toll free:  
877-436-1919.

## RELATIONSHIPS:

This time, click on Relationships, and the screen will look like the one below.



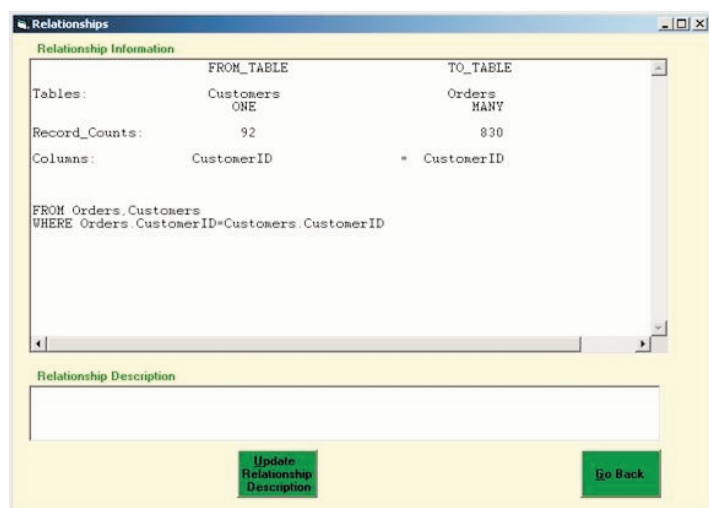


Please call us toll free:  
877-436-1919.

## RELATIONSHIP INFORMATION:

The panel on the right shows that there is a relationship between the Customers Table and the Orders Table. Click on the Orders item in the right panel, and a screen will appear as shown below:

This report shows details about the relationship between Customers and Orders, including that One Customer relates to Many Orders, and showing the approximate number of records in each table. It also displays which columns of each table are equal in order to perform the join between the tables. At the bottom, it offers suggested SQL that can be used to cut and paste into application code.



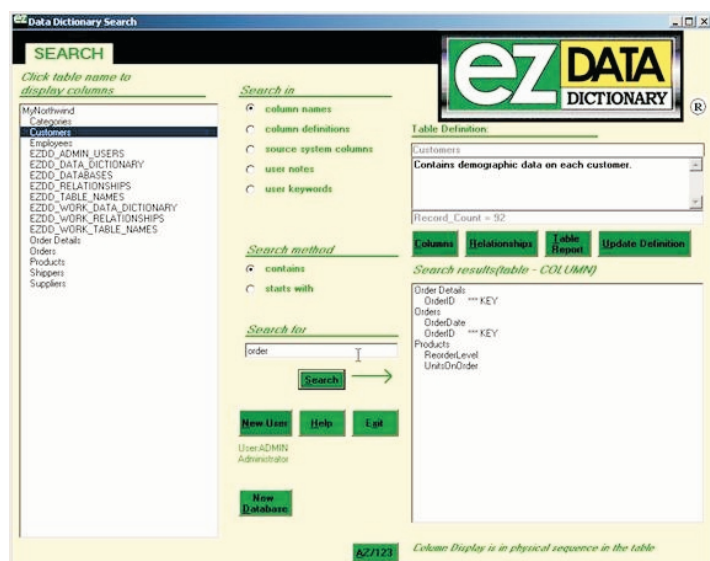


Please call us toll free:  
877-436-1919.

## SEARCH PARAMETERS:

Next, click your mouse in the text box in the middle of the screen about half way down, right below where it says "Search For." In that box, type the word "Order" and click "Search." The next screen will look like the one below:

The panel on the right now shows all the tables and columns where the column name contains the letters "order." This is a fast way for a user to find the data they are looking for, without even knowing the tables or columns of the database. With a mouse click on the table name "Products" in the right hand panel, the table definition in the upper right hand panel will change to show what the Products table is all about. With a mouse click on the column name "UnitsOnOrder," the screen will display that shows all the detailed definitions for that column. If the radio button near the top middle of the screen is clicked to say to search the Column Definitions, and then Search is clicked again, all the tables and columns in the database will be found where the definition contains the letters "order". In a similar way, the source system columns, the user notes, or the user keywords can each be searched.





Please call us toll free:  
877-436-1919.

## **COLUMNS:**

By clicking on the "Columns" button, the right panel will again display the columns of the Customers table. The Table definition can be changed with the appropriate Authority level and a click on the button "Update Definition" to post the change to the database.

## **TO ORDER:**

A single user copy of EZ Data Dictionary® can be purchased for \$699. A 30 day money back guarantee (no questions asked) is always automatic.

A 10 user license (windows technology) is \$3,500. A 100 user license (using Web technology) is a one time fee of \$10,000 plus annual maintenance of \$2,000 plus a one time installation fee of \$5,000. The installation fee includes two days of on site training. This training helps systems professionals learn the many options for configuring the system and populating the tables with table names and column names. The two days could also be used to add other databases to the EZ Data Dictionary® system, if time is available.

Please call us toll free:  
877-436-1919.

Or fax purchase order to:  
503-297-8471.